



APRIL 14-16 CEDAR CREEK, TX



★ *Hyatt Regency Lost Pines Resort* ★

TEFN 2026

★ ANNUAL STATE CONFERENCE ★

Welcome to the 2026 TEFN Annual Conference!

Texas Education Foundation Network (TEFN) was created to support local school education foundations in Texas by providing networking opportunities, sharing of best practices, and training & resources needed for foundations to be successful. TEFN is a program of Texas Pioneer Foundation, a private, independent foundation established to support outstanding and innovative educational programs and projects in Texas.

It's been 17 years since the first meeting of school foundations in Texas. In 2009, a group of 35 Texas Pioneer Foundation grantees gathered together to share their experiences. During that first meeting, we found there was a strong desire to create networking opportunities and training for school foundations in Texas.

As a result, we formed a conference committee from various school foundations across the state who developed the first annual conference the following year in 2010. There were 89 attendees for the first conference. Thanks to your support, the network and the conference have grown considerably. We are expecting almost 300 attendees this year representing executive directors, board members and staff from over 122 school foundations in Texas.

This year's conference will feature non-profit consultants, executive directors and professional speakers presenting 48 breakout and general sessions.

We are excited to see everyone again and thank you for joining us!



Fred Markham
President & CEO
Texas Pioneer Foundation



Michelle Coburn
Executive Director
Texas Pioneer Foundation



Table of Contents

05	Schedule
07	Tuesday Schedule
10	Wednesday Schedule
16	Thursday Schedule
19	Conference App
20	Speaker Directory
23	Outstanding Achievement Award Recipients
24	Hotel Map



The Texas Education Foundation Network is a program of the Texas Pioneer Foundation.

The Texas Education Foundation Network (TEFN) was launched in 2012 as a program of the Texas Pioneer Foundation and was created to support local education foundations in Texas by providing networking opportunities, sharing of best practices and providing training and resources needed for foundations to be successful. The Texas Pioneer Foundation is a private independent foundation established to support outstanding and innovative educational programs and projects in Texas.



2026 TEFN Conference Committee



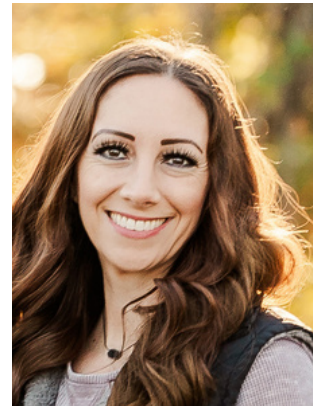
Aaron Glaeske
Victoria ISD Education
Foundation



Allison Brubaker
Austin Ed Fund



Allison Vrana
La Vega Pirates
Education Foundation



Arin Lane
Gainesville ISD
Education Foundation



Carrie Williamson
Prosper Education
Foundation



Deanna Jackson
Schertz-Cibolo-Universal
City ISD



Gina Welsh
Sante Fe ISD Education
Foundation



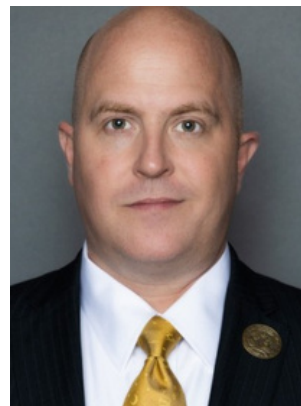
Jillian Nash
Seguin Education
Foundation



Kathleen Crowe
Dallas Education
Foundation



Kim Crumrine
Royse City ISD Education
Foundation



Russell Booth
El Paso ISD Education
Foundation



Shannon Darby
Leander Educational
Excellence Foundation



TEFN Advisory Council



Judy Geelhoed
SAISD Education
Foundation



Karen Anderson
Red Oak ISD
Education Foundation



Randy Lewallyn
Mesquite ISD
Education Foundation



Shawn Callaway
Foundation
Innovation LLC



Suzi Pagel
Foundation
Innovation LLC



Valerie Foster
Sanger Education
Foundation

Conference Overview

Tuesday, April 14, 2026

10:00 a.m. – 5:00 p.m.	Conference Check-In.....	Baron’s Ballroom Foyer
8:00 a.m. – 5:00 p.m.	Conference Lounge Open.....	Dewitt
12:00 p.m. – 12:30 p.m.	Welcome & Opening Remarks.....	Baron’s Ballroom
12:30 p.m. – 1:30 p.m.	Keynote Speaker.....	Baron’s Ballroom
1:45 p.m. – 3:00 p.m.	Breakout Sessions.....	Mina, Navarro Y Bangs, Austin, Houston, Robertson-Leftwich, Milam
3:15 p.m. – 4:30 p.m.	Breakout Sessions.....	Mina, Navarro Y Bangs, Austin, Houston, Robertson-Leftwich, Milam
5:00 p.m. – 6:00 p.m.	Networking Reception.....	Riverbend Barn
6:00 p.m. – 8:00 p.m.	Dinner Buffet.....	Riverbend Barn

Wednesday, April 15, 2026

8:00 a.m. – 5:00 p.m.	Conference Check-In.....	Baron’s Ballroom Foyer
8:00 a.m. – 5:00 p.m.	Conference Lounge Open.....	Dewitt
7:30 a.m. – 8:00 a.m.	Networking Breakfast.....	Baron’s Ballroom
8:00 a.m. – 9:00 a.m.	Breakfast Program Panel Discussion.....	Baron’s Ballroom
9:15 a.m. – 10:30 a.m.	Breakout Sessions.....	Mina, Navarro Y Bangs, Austin, Houston, Robertson-Leftwich, Milam
10:45 a.m. – 12:00p.m.	Breakout Sessions.....	Mina, Navarro Y Bangs, Austin, Houston, Robertson-Leftwich, Milam
12:15 p.m. – 1:30 p.m.	Lunch Program.....	Baron’s Ballroom
1:45 p.m. – 3:00 p.m.	Breakout Sessions.....	Mina, Navarro Y Bangs, Austin, Houston, Robertson-Leftwich, Milam
3:15 p.m. – 4:30 p.m.	Breakout Sessions.....	Mina, Navarro Y Bangs, Austin, Houston, Robertson-Leftwich, Milam
5:00 p.m. – 6:00 p.m.	Networking Reception.....	LBJ Pavilion
6:00 p.m. – 8:00 p.m.	Dinner Buffet.....	LBJ Pavilion

Conference Overview

Thursday, April 16, 2026

8:00 a.m. – 12:00 p.m.	Conference Check-In.....	Baron’s Ballroom Foyer
8:00 a.m. – 12:00 p.m..	Conference Lounge Open.....	Dewitt
7:30 a.m. – 8:15 a.m.	Networking Breakfast Buffet	Baron’s Ballroom
8:30 a.m. – 9:45 a.m.	Breakout Sessions.....	Mina, Navarro Y Bangs, Austin, Houston, Robertson-Leftwich, Milam
10:00 a.m. – 11:15 a.m.	Breakout Sessions.....	Mina, Navarro Y Bangs, Austin, Houston, Robertson-Leftwich, Milam
11:30 a.m. – 11:45 a.m.	Closing Remarks & Drawings.....	Baron’s Ballroom

Conference Welcome



Dr. Quintin Shepherd
Pflugerville ISD

Dr. Quintin Shepherd is the Superintendent of Pflugerville ISD, just north of Austin, Texas, where he spends his days thinking about how belief becomes opportunity for students and how systems either help or hinder that work. He is the author of the forthcoming book *The Art of School Board Leadership*, which explores service, stewardship, and influence inside complex public systems. Quintin has served in education for more than two decades, including roles as a teacher, principal, and superintendent in multiple states. He works closely with school boards, foundations, and community partners who care deeply about students and occasionally lose sleep wondering if they are focusing on the right things. When he is not thinking about public education, Quintin is usually running long distances, lifting heavy things he does not need to lift, or trying to convince his family that the next big idea will definitely be the last one. He is grateful for people who choose service over spotlight...and believes school foundations quietly do some of the most important work in public education.



Tuesday, April 14 Schedule

10:00 – 5:00 CONFERENCE CHECK-IN

Baron's Ballroom Foyer

8:00 – 5:00 CONFERENCE LOUNGE OPEN

Dewitt

12:00 – 1:30 WELCOME & INTRODUCTIONS

Baron's Ballroom

Michelle Coburn, Executive Director – Texas Pioneer Foundation

Keynote Address - From Fundraising to Future Making: The Next Evolution of School Foundations

Dr. Quintin Shepherd, Superintendent – Pflugerville ISD

Baron's Ballroom

Dr. Quintin Shepherd draws from his forthcoming book *The Art of School Board Leadership* to challenge a quiet assumption many foundations live inside of...that their job is to raise money and support programs. In reality, foundations are among the most powerful stewards of community trust and philanthropic capital in public education. What they choose to fund, champion, and legitimize shapes the futures students are able to imagine and reach. Using stories from Texas districts and communities, including work around the "3 E's Promise" (employment, enrollment, enlistment), Dr. Shepherd will explore how foundations can move from transactional giving to transformational stewardship. Attendees will leave with a clearer understanding of how to align dollars, relationships, and influence around outcomes that actually change student trajectories, not just balance sheets.

1:45 – 3:00 BREAKOUT SESSIONS

Fish Camp 101 - Education Foundation Basics & Essentials

Shawn Callaway, President – Foundation Innovation LLC

Mina

Feeling a little overwhelmed about running a successful organization? Join us as we walk through basic steps, opportunities and overall best practices seen in successful foundations across the state and country. We will break our sessions down into important focus areas like corporate documents, compliance & governance, development & capacity building, programming, events and marketing so that you feel cool, calm, collected and in control as you lead your foundation to the next level!

Building Donor Relationships is a Skill (Not a Personality Trait)

Kenny Sigler, Founder – Sigler & Co

Navarro Y Bangs

We already know how important donor relationships are! The challenge is how to invest real time and structure into building them in our chaotic work. In this session, you'll learn specific skills and simple systems you can use to build purposeful relationships regardless of the size of your organization. By the end of this session, participants will have a simple framework they can use to plan meaningful donor engagement activities and more confidence to put it into action.

Transitioning from Event-Centered Fundraising to an Annual Campaign

Teresa Benden, Executive Director – College Station ISD Education Foundation

Austin

Is your fundraising dependent upon only events? Learn how to develop an annual fundraising campaign that includes your events. We will discuss themes, creating a menu of sponsorships, fundraising strategies and how to recognize donors. Learn how your foundation can increase annual donations and make them sustainable.

Tuesday, April 14 Schedule

Leading Through Board Transition: A Strategic Planning Approach

Randy Lewallyn, Executive Director - Mesquite ISD Education Foundation

Houston

Since 2004, the Mesquite ISD Education Foundation has benefited from a highly effective and engaged board deeply committed to its mission. Many directors have served for more than a decade and are pillars of the community. However, boards are living, evolving organizations, and change is inevitable. Strong leadership requires intentional planning and close collaboration between staff and board to ensure long-term organizational stability. When unaddressed, a longstanding strength can become a weakness. In this session, attendees will learn about the Mesquite ISD Education Foundation's intentional, collaborative process for adopting formal changes to prepare for inevitable board transition. This session is relevant for foundations currently navigating transition, as well as those proactively building a healthy, sustainable board structure.

Raising Big for Our Kids: A Small-Town Guide to Education Foundation Fundraising

Kim Crumrine, CEFL, Executive Director - Royse City ISD Education Foundation

Robertson-Leftwich

Small suburban communities often present a unique set of challenges and opportunities for education foundations. You might not have Fortune 500 companies knocking on your door or a contact list full of millionaires. But what you do have is something just as powerful: tight-knit communities and a shared belief in giving our kids the best. This presentation isn't about wishing you were somewhere else. It's about recognizing the incredible strengths right in your own backyard and turning them into fundraising gold. Learn how to leverage your community's heart, think beyond the big check, and build lasting connections. You will leave with actionable strategies, fresh ideas, and a renewed sense of confidence that you can build a thriving education foundation right where you are.

Strategic Partnerships in Public Education: The Foundation-District Relationship

Suzi Pagel, Lead Strategist - Foundation Innovation LLC

Milam

This presentation focuses on defining and strengthening the partnership between public school districts and education foundations through clear roles, alignment, and collaboration. It highlights how strong district-foundation relationships enhance impact and expand educational opportunities for the students they serve. Participants will be able to assess and clarify their foundation's role in relation to the school district, identifying opportunities to strengthen alignment, communication, and trust. Participants will gain practical strategies to enhance district-foundation collaboration in ways that increase impact and better support student focused initiatives.

3:15 - 4:30 BREAKOUT SESSIONS

Fish Camp 102 - Education Foundation Basics & Essentials

Shawn Callaway, President - Foundation Innovation LLC

Mina

(Continuing) This is a continuation of Fish Camp 101, participants will grow their knowledge and insight into the daily operations of the best foundations in Texas and across the country. In addition to covering insights and information, participants will have Q & A time to drill down into specifics and how to run efficient and effective foundations.

Tuesday, April 14 Schedule

Catalyzing Strategic Donor Relationships: From One-Time Gifts to Long-Term Partnership

Kristin Campbell, Principal Consultant - Kristin Campbell Consulting

Navarro Y Bangs

Transform your approach to fundraising by focusing on long-term donor relationships instead of one-time transactions. This session will equip you with tools and strategies to design a donor journey that feels personal, purposeful, and sustainable—even on a small team or limited budget. Participants will leave with a customizable donor journey map and board-friendly engagement tools to deepen stewardship over time.

One Ask, One Impact: Building a Comprehensive Annual Partnership Program

Brandy Groth, Executive Director - Alvin ISD Education Foundation

Austin

This session demonstrates how to package event sponsorships and program support into a single 'visual marketing document' that ties your entire year of opportunities into a pretty bow. This proactive approach allows you to identify gaps early and concentrate your efforts on specific events or areas that need more attention, moving your foundation from reactive soliciting to strategic planning. Attendees will learn how to use an annual partnership model to gain year-long visibility into event capacity. You will gain the ability to track event 'sell-outs' far ahead of time, learn how to look at your partnership data at the start of the year and know exactly how many commitments are already secured for future events months down the road.

Using ChatGPT as Your Part-time Assistant

Trina Silva, Education Foundation and Partnerships Director - Education Foundation of Harris County

Houston

Do you feel overwhelmed with all the things you need to get done in your role and you need help? This presentation will help you navigate using ChatGPT as your digital assistant to help you plan and get tasks done quickly.

Shooting for Success: Beeville Education Foundation Clay Shoot, Silent & Live Auction

Sheri Bolland, President - Beeville Education Foundation

Robertson-Leftwich

Patti Pawlik-Perales, Secretary - Beeville Education Foundation

Bonnie Schendel, Vice President of Development - Beeville Education Foundation

The Beeville Education Foundation began "Shooting for Success" with the launch of its "Clay Shoot, Silent & Live Auction Event," set annually for late March for the last five years. Join us as we share the event and all that goes into preparing and enjoying the day that supports Beeville ISD through the efforts of our sponsors, attendees and our hardworking Beeville Education Foundation.

How to Market Your Foundation Like a Corporation

Crystal Scanio, President and CEO - Irving Schools Foundation

Milam

Learn how to apply corporate marketing strategies such as brand positioning, storytelling, and data-driven outreach to elevate your foundation's visibility and donor engagement. This session will equip participants with practical tools to strengthen messaging, build trust, and drive sustainable growth.

5:00 - 6:00 NETWORKING RECEPTION

Riverbend Barn

6:00 - 8:00 DINNER BUFFET

Riverbend Barn

Wednesday, April 15 Schedule

8:00 - 5:00 CONFERENCE CHECK-IN

Baron's Ballroom Foyer

8:00 - 5:00 CONFERENCE LOUNGE OPEN

Dewitt

7:30 - 8:00 NETWORKING BREAKFAST

Baron's Ballroom

8:00 - 9:00 Breakfast Program Panel Discussion

Imagine the Impact: When District & Philanthropic Priorities Meet

Becky Calahan, Managing Director - Philanthropy Advocates

Baron's Ballroom

Mita Havlick, Executive Director - Dallas Education Foundation

Courtney Rogers, Vice President - Moody Foundation

Erin Windham, Executive Director - Nacogdoches ISD Education Foundation

The most powerful education philanthropy doesn't start with a grant—it starts with alignment. In this breakfast panel, hear directly from a private foundation grantmaker and education foundation leaders about what it takes to build initiatives that move beyond one-off funding toward sustained, measurable impact for students. Panelists will share real examples of funded initiatives and explore:

- How education foundations identify the right funding opportunities—not just available ones
- What it looks like to implement funded work with fidelity and measurable outcomes
- How stewardship and district alignment build the trust funders are looking for
- Why it's okay to get a no—and okay to say no to dollars that don't fit

Whether you're just beginning to explore private philanthropy or looking to deepen existing funder relationships, this session offers honest insight from both sides of the table.

9:15 - 10:30 BREAKOUT SESSIONS

Building & Maintaining Donor Relationships

Amanda McLauchlin, Managing Partner - McLauchlin & Associates

Mina

Discover practical strategies to build authentic, lasting donor relationships that increase retention and deepen engagement. Participants will leave with actionable tools to personalize outreach, strengthen stewardship, and create a donor centered culture that drives sustainable support.

The Gift of a Lifetime: Promoting Planned Gifts on a Shoestring Budget

Suzi Pagel, Lead Strategist - Foundation Innovation LLC

Navarro Y Bangs

This session explores simple, accessible planned giving options that allow donors to make a lasting impact on public education. Designed for education foundation leaders, this presentation highlights practical, low-cost strategies for promoting planned gifts—such as bequests and beneficiary designations—while building long-term sustainability and deepening donor relationships. Participants will be able to identify and confidently explain basic planned giving options that donors can use to support education foundations. Participants will leave with practical, budget-friendly strategies for promoting planned gifts and integrating them into their existing donor communications.

Wednesday, April 15 Schedule

From Greens to Greatness: Planning a Memorable Indoor Golf Fundraiser

Nikki Davis, Executive Director - Wichita Falls ISD Foundation Inc.

Austin

Discover how to plan and execute a high-impact indoor golf fundraiser that boosts revenue, energizes your community, and strengthens support for your educational foundation. Participants will gain practical strategies, creative ideas, and ready-to-use tools to turn a golf-themed event into a memorable, repeatable fundraising success.

Strategic Planning Without the Pain: A Practical, People-Centered Path to Progress

Brian Brandt, President - Core Insights

Houston

Strategic planning doesn't have to be overwhelming or exhausting. In this interactive session, participants will learn a clear, practical, and people-centered approach to building a strategic plan that aligns mission, vision, and daily action—while building a stronger team approach.

Everyone Plays a Role: Using the Working Genius Model to Build Energized, Aligned Foundation Teams

Kristin Campbell, Principal Consultant - Kristin Campbell Consulting

Robertson-Leftwich

Discover a powerful yet simple tool to help your foundation team and board get unstuck, aligned, and working in their zones of genius. In this session, you'll learn how the Working Genius model helps leaders delegate better, collaborate more easily, and reduce burnout across staff and board relationships—even if you haven't taken the assessment yet.

Grant Writing & AI for Nonprofits

Kristal Frazier, Nonprofit Consultant - FundJoy®

Milam

This interactive workshop provides a practical three-part system for identifying funding opportunities aligned with your foundation's mission and capacity, writing compelling narratives that include all essential components, and leveraging AI tools ethically to increase productivity. Participants will learn grant writing best practices and insider strategies from an experienced federal and foundation grant reviewer who understands what funders look for when making funding decisions.

10:45 - 12:00 BREAKOUT SESSIONS

Putting Stakeholders in the Driver's Seat of Fundraising

Amanda McLauchlin, Managing Partner - McLauchlin & Associates

Mina

Learn how to engage stakeholders as active partners in your fundraising strategy rather than passive supporters. Participants will gain practical tools to empower ambassadors, strengthen ownership, and create collaborative approaches that expand reach and drive sustainable giving.



Wednesday, April 15 Schedule

Beyond Scholarships and Teaching Grants. How any-sized school district can Learn and Earn to Postsecondary Success, a Case Study

Mita Havlick, Executive Director – Dallas Education Foundation

Navarro Y Bangs

Lexy Young, Director of Public Relations & Community – Methodist Dallas Medical Center

Learn and Earn "Summer Camp" Internships are a powerful bridge between classroom learning and college and career pathways. Through authentic experiences and credentialing in areas of study such as healthcare, technology, and business, students can explore future careers and gain confidence, professional readiness, and economic opportunity. Follow along a case study of how the Dallas Education Foundation worked in alignment with Dallas ISD and our community partner, Methodist Dallas Medical Center, to provide our students with this unique opportunity, and more importantly, how you can advance work-based extended education in your school districts, no matter where or what size.

Alumni Engagement 101

Jessica Almaraz, Director of Donor & Alumni Relations – Alamo Heights School Foundation

Austin

Your alumni are one of your most underutilized resources. This session will highlight proven approaches education foundations and school districts can use to build meaningful alumni relationships that lead to increased engagement and giving. From annual and planned giving to class reunions and alumni-focused events, attendees will gain practical tools and ideas they can immediately apply to grow alumni participation and support.

Future-Proofing Leadership: Practical Succession Planning for Executive and Board Continuity

Brian Brandt, President – Core Insights

Houston

Leadership transitions don't have to create uncertainty or disruption. In this engaging session, participants will learn how to design a clear, proactive succession plan for both executive and board leadership—ensuring stability, continuity, and long-term mission impact.

Onboarding & Organizing Board Members

Jennifer Garcia, Executive Director – Clear Creek Education Foundation

Robertson-Leftwich

Learn practical approaches to onboarding and organizing board members that increase clarity, engagement, and alignment. This session will highlight real-world strategies to help your foundation build a more cohesive and effective board. Participants will be able to identify gaps in their current board onboarding and organizational processes and outline actionable steps to improve clarity and engagement. Participants will leave with ideas to strengthen role definition and communication structures within their foundation's board.

Grant Writing & AI for Nonprofits (repeat)

Kristal Frazier, Nonprofit Consultant – FundJoy®

Milam

This interactive workshop provides a practical three-part system for identifying funding opportunities aligned with your foundation's mission and capacity, writing compelling narratives that include all essential components, and leveraging AI tools ethically to increase productivity. Participants will learn grant writing best practices and insider strategies from an experienced federal and foundation grant reviewer who understands what funders look for when making funding decisions.

Wednesday, April 15 Schedule

12:15 - 1:30 LUNCH PROGRAM: NEW LEGISLATION IMPACTING EDUCATION FOUNDATIONS & LEGAL UPDATES

Janet Bubert, Attorney - Underwood Law Firm

Baron's Ballroom

An overview of new legislation that may directly or indirectly impact the operation of education foundations in Texas along with an update on recent rule changes and decisions by courts and other authorities. Learn about changes to law, administrative rules, and decisions by applicable authorities governing nonprofit organizations to ensure ongoing legal compliance

1:45 - 3:00 BREAKOUT SESSIONS

Trust, Transparency & Impact: Best Practices for Legal Compliance

Janet Bubert, Attorney - Underwood Law Firm

Mina

This session will provide a guided audit of best practices to ensure legal compliance for education foundations in a variety of areas including: governance, effective use of committees, organization policies, and fundraising activities. Leave with a plan for conducting an audit of your education foundation to ensure ongoing compliance and to foster trust and confidence in your organization.

The Life Cycle of an Organization: Where You Are, What's Next, and Why It Matters

Kenny Lange, Scaling Coach - Kenny Lange Coaching

Navarro Y Bangs

Every organization moves through predictable stages of growth – and most get stuck when complexity outgrows improvisation. In this interactive session, you'll learn to diagnose exactly where your foundation sits on the organizational life cycle and discover the specific moves that unlock your next stage of healthy growth. Identify which of the seven lifecycle stages your organization is currently in and recognize the specific signals, risks, and priorities of that stage. Walk away with a practical 30-day focus tailored to your organization's current stage to build momentum toward sustainable growth.

From Overwhelmed to Automated: AI Systems for Education Foundations

Jane Kernen, LTEF & Corporate Relations Specialist - Lake Travis Education Foundation

Austin

Build simple AI systems to automate your foundation's work. Walk away with real examples, plug and play workflows for grants, scholarships and communication.

From Routine to Results Board Meetings That Drive Better Decisions

Brian Brandt, President - Core Insights

Houston

Too many board meetings are packed with reports but light on meaningful engagement. In this highly interactive session, participants will learn practical tools and creative strategies to transform routine board meetings into dynamic, mission-focused conversations that lead to clearer thinking, stronger collaboration, and better organizational decisions. They're board meetings your board will want to attend.



Wednesday, April 15 Schedule

Board Development That Moves the Needle: Aligning Culture, Roles, and Responsibility

Kristin Campbell, Principal Consultant - Kristin Campbell Consulting

Robertson-Leftwich

Strong boards don't happen by accident—they're built through intentional structure, role clarity, and a culture that invites real contribution. This session will guide you through fresh approaches to board composition, engagement, and governance that can energize your foundation's leadership and align your board with your mission.

Expanding Your Reach: Building a Community-Focused Monthly Giving Program

Cameka L. Crawford, CFRE - The Richardson ISD Foundation

Milam

Erayne Hill, Founder & Principal - The Genuine Article LLC

Looking to grow sustainable support beyond employee giving? Learn how to design a monthly giving program that engages individuals and small-to-medium-sized businesses, build momentum from the ground up, and craft messaging that resonates with your community, plus take part in a hands-on activity to begin shaping a campaign tailored to your foundation's goals.

3:15 - 4:30 BREAKOUT SESSIONS

Ready, Set, Let's Market!

Dawn Parnell, Lead Strategist - Foundation Innovation LLC

Mina

Marketing your foundation isn't just about getting your message out there; it's about deeply connecting with the community you serve. This hands-on session will guide you through developing a marketing plan designed to create community awareness and cultivate genuine trust that will help ensure your foundation's lasting impact.

Purpose-Driven Relationships: The Four Leadership Styles Every Team Needs

Kenny Lange, Scaling Coach - Kenny Lange Coaching

Navarro Y Bangs

The best teams aren't built on personality—they're built on understanding how different leadership styles create or block high-quality decisions. Through a quick self-assessment and hands-on exercises, you'll discover your natural leadership style and learn how to build teams that balance vision, execution, systems, and collaboration.

Investing in Innovation: A Journey from Educator Grants to Systemic Change Management

Ryan O'Donnell, Administrative Supervisor of Programs & Project - Austin Ed Fund

Austin

Cecilia Gutierrez, Coordinator of Programs & Project Management - Austin Ed Fund

JaCorey Mosely, Coordinator of Programs & Project Management - Austin Ed Fund

Join us to learn how Austin Ed Fund evolved from a grant-making organization, investing over \$3 million in innovative classroom projects, into a vital and strategic partner of Austin ISD. We'll share the impact of our College and Career Readiness programs and Early Literacy initiative, along with valuable lessons, challenges encountered, and successful strategies. Attendees will learn how an education foundation can broaden its impact on students through strategic alignment with the school district.

Wednesday, April 15 Schedule

Board Development - Succession Planning

Valerie Foster, Executive Director - Sanger Education Foundation

Houston

This interactive session explores how to build your board and leadership for succession. Vet term limits, cohesiveness while building a board of directors depth in talent and full engagement. Planning for succession does not stop at the Board, but also expands to building a successful succession plan for building consistent and successful foundation staff transitions.

From Partners to Powerhouses: Transforming Engagement into District-Wide Impact

Brittnea Ussery, Senior Executive Director - Plano ISD Education Foundation

Robertson-Leftwich

In today's evolving educational landscape, school districts and foundations must move beyond transactional partnerships and build systems that cultivate long-term, meaningful community investment. This session will explore how education foundations and school districts can collaborate effectively to elevate Partners in Education programs into a strategic engine for district-wide support. Through real-world insights and practical strategies, this session will equip education foundation leaders with the tools to align with district partners, streamline processes, and create a culture where every supporter feels seen, valued, and motivated to do more. Participants will walk away with actionable ideas to transform your program from a collection of partnerships into a unified, high-impact network of champions for your students, teachers, and schools.

The Summer Camp Blueprint

Ashley Sine, Director - Frisco Education Foundation

Milam

Have you ever considered hosting a summer camp? This session will walk you through everything you need to launch a successful program, from initial planning to execution. The Frisco Education Foundation brings years of experience, having hosted a STEAM summer camp since 2008 while continuously refining and improving its approach.

5:00 - 6:00 NETWORKING RECEPTION

LBJ Pavilion

6:00 - 8:00 DINNER BUFFET

LBJ Pavilion

Special Thanks To

2026 Conference Graphics and
Videography Team



Maya Golden Bethany



Jason Bethany

2026 Conference
Photography



CHARLES QUINN
PHOTOGRAPHY

2026 Conference Print Services



UT Tyler PATRIOT
PRINTING

Thursday, April 16 Schedule

8:00 - 12:00	CONFERENCE REGISTRATION	Baron's Ballroom Foyer
8:00 - 12:00	CONFERENCE LOUNGE OPEN	Dewitt
7:30 - 8:15	NETWORKING BREAKFAST BUFFET	Baron's Ballroom
8:30 - 9:45	BREAKOUT SESSIONS	

The Lucrative Art of Great Donor Discovery

Rachel Muir, CFRE - Nonprofit consultant, speaker & trainer

Mina

Your time with donors is a precious commodity. How do you make every second count? Our special guest Rachel Muir, CFRE will share "best of" questions to quickly build rapport with donors, tips, strategies, and tools to help you get your foot in the door, easy networking openers and how to use unforgettable events to quickly advance a key relationship.

Foundation AI Toolbox: 20+ Game-Changing Tools

Bhavani Kola, CEO/Founder - Eclatech Solutions

Navarro Y Bangs

Learn to leverage 20+ AI tools to maximize your foundation's impact while minimizing resource strain, with practical workflows for grant writing, data visualization, digital storytelling, and donor engagement that deliver immediate productivity gains. Participants will integrate AI tools into daily operations to automate grant writing, meeting summaries, and administrative tasks, freeing up 5-10 hours weekly for strategic work. Participants will leverage AI-assisted data analysis and storytelling tools to enhance fundraising materials and demonstrate measurable foundation impact to stakeholders and donors.

Raising \$1 Million: A Blueprint for School Foundation Event Success

Vanessa Maynes, Events Manager - Alamo Heights School Foundation

Austin

Learn how the Alamo Heights School Foundation has built and sustained an annual event that raises over \$1 million for public education. This session will provide a step-by-step blueprint for planning and executing large-scale fundraising events, covering sponsorship strategies, community engagement, logistics, and donor stewardship. Whether your foundation is just beginning to grow or looking to elevate existing events, you'll leave with actionable tools and proven practices to maximize impact and revenue.

Endowments - Evaluating your Foundation's Capacity and Best Practices

Valerie Foster, Executive Director - Sanger Education Foundation

Houston

What exactly is an endowment fund? This session will focus on the many options and means in which to establish an endowment and/or expand your endowment funds into individually named endowments thus creating a perpetual funding pathway for legacy giving with scholarships and foundation programs. But first, do you understand what a perpetual source of funding is? Do you have the capacity or policies to grow an endowment fund? Does your organization and your supporters lend itself to having an endowed fund through legacy gifts, memorial gifts, or through estate planning? If so, and there is a need to build a sustainable source of funding for not just scholarships but also for instructional programs this might be your session. This is a perfect session for new or established foundations looking to expand or develop an endowment program.

Thursday, April 16 Schedule

Leveraging the National Network: Getting the Most from your NAEF Membership

Mike Taylor, CEO- National Association of Education Foundations

Robertson-Leftwich

This session will explore how education foundations can fully leverage their membership with the National Association of Education Foundations (NAEF) to strengthen their work locally and nationally. Participants will learn about key resources, national advocacy and policy efforts, and emerging trends in the education foundation field, along with practical ways foundations of all sizes can stay informed, get engaged, and increase their impact.

Employee Giving Campaigns: Cultivating an Overlooked Constituency

Teresa Benden, Executive Director - College Station ISD Education Foundation

Milam

Christy Tarkington, Assistant Director - Humble ISD Education Foundation

Discover how to engage an often-overlooked audience—your district staff and teachers—to support your education foundation. We'll share practical tips, useful tools, and a clear action plan to help you make a compelling pitch to this vital group. This will give participants tools and a plan of action on how to implement an employee giving program. It will help them reach a demographic that can be a game-changer in their fundraising strategies.

10:00 - 11:15 BREAKOUT SESSIONS

Love 'Em or Lose 'Em: Donor Retention Secrets Nobody Told You

Rachel Muir, CFRE - Nonprofit consultant, speaker & trainer

Mina

According to the latest research by the Fundraising Effectiveness Project 86% of first-time donors will not make a second gift. Can you afford to let your donors fade away? What will make them stay? Get all the tools to guarantee a long-term future with your donors. Ready for easy, affordable time saving tips to thank donors? Learn the art of an unforgettable thanks and how to make donors obsessed with you in a totally healthy way!

Foundation AI Toolbox: 20+ Game-Changing Tools (repeat)

Bhavani Kola, CEO/Founder - Eclatech Solutions

Navarro Y Bangs

Learn to leverage 20+ AI tools to maximize your foundation's impact while minimizing resource strain, with practical workflows for grant writing, data visualization, digital storytelling, and donor engagement that deliver immediate productivity gains. Participants will integrate AI tools into daily operations to automate grant writing, meeting summaries, and administrative tasks, freeing up 5-10 hours weekly for strategic work.



Thursday, April 16 Schedule

Stories That Stick: Crafting Impactful Narratives On and Offline

Crystal Scanio, President and CEO - Irving Schools Foundation

Austin

Gabriel Deem, Marketing Coordinator - Irving Schools Foundation

Learn how to craft compelling stories that resonate with donors and drive meaningful engagement, both in person and across digital platforms. This session will equip participants with practical strategies to translate their mission into powerful narratives and amplify them effectively through social media to inspire action and increase support.

Building Bright Futures Together: Reaching Shared Goals

Judy Geelhoed, Executive Director - SAISD Foundation

Houston

Too often, education foundations are not seen by school districts or the community as critical partners to reach collective goals. This presentation will share proven programming examples that serve as a model for how education foundations can identify and fill critical gaps for school districts and communities that lead to increased student outcomes and success. In times of financial scarcity, it has never been more important to ensure education foundations work where they are most needed and most effective.

Onboarding & Organizing Board Members (repeat from Wednesday)

Jennifer Garcia, Executive Director - Clear Creek Education Foundation

Robertson-Leftwich

Learn practical approaches to onboarding and organizing board members that increase clarity, engagement, and alignment. This session will highlight real-world strategies to help your foundation build a more cohesive and effective board. Participants will be able to identify gaps in their current board onboarding and organizational processes and outline actionable steps to improve clarity and engagement. Participants will leave with ideas to strengthen role definition and communication structures within their foundation's board.

Strategic Partnerships in Public Education: The Foundation-District Relationship (repeat from Tuesday)

Suzi Pagel, Lead Strategist - Foundation Innovation LLC

Milam

This presentation focuses on defining and strengthening the partnership between public school districts and education foundations through clear roles, alignment, and collaboration. It highlights how strong district-foundation relationships enhance impact and expand educational opportunities for the students they serve. Participants will be able to assess and clarify their foundation's role in relation to the school district, identifying opportunities to strengthen alignment, communication, and trust. Participants will gain practical strategies to enhance district-foundation collaboration in ways that increase impact and better support student focused initiatives.

11:30 - 11:45 CLOSING REMARKS & DRAWINGS

Baron's Ballroom



2026 Conference App



Download the Conference App to Complete Session Evaluations

Once you have downloaded the **TBM Engage** app, enter in the 2026 TEFN Annual Conference app code: **TEFN2026**

Click on the 2026 TEFN Annual Conference to be taken to the event's login screen. On the login screen, attendees create their own account using their email address and the password of their choice.

To submit evaluations, locate each session you attend and complete "SURVEY" to submit your feedback. Your input helps the conference committee create a better conference!



2026 Speaker Directory

SPEAKER	ORGANIZATION	TITLE	EMAIL
Amanda McLaughlin	McLaughlin & Associates	Managing Partner	amanda@mclaughlinandassociates.com
Ashley Sine	Frisco Education Foundation	Director	sinea@friscoisd.org
Becky Calahan	Philanthropy Advocates	Managing Director	bcalahan@philanthropyadvocates.org
Bhavani Kola	Eclatech Solutions	CEO/Founder	bhavanikola@gmail.com
Brandy Groth	Alvin ISD Education Foundation	Executive Director	bgroth@alvinisd.net
Brian Brandt	Core Insights	President	brian@coreinsightsleadership.com
Brittnea Ussery	Plano ISD Education Foundation	Senior Executive Director	brittnea.ussery@pisd.edu
Bonnie Schendel	Beeville Education Foundation	Vice President of Development	
Cameka Crawford	The Richardson ISD Foundation	President	cameka.crawford@risd.org
Crystal Scanio	Irving Schools Foundation	President & CEO	cscanio@irvingisd.net
Christy Tarkington	Humble ISD Education Foundation	Assistant Director	christy.tarkington@humbleisd.net
Courtney Rogers	The Moody Foundation	Vice President, Education	
Dawn Parnell	Foundation Innovation LLC	Lead Strategist	dawnp@foundationinnovation.com
Erayne Hill	The Geenuine Article LLC	Founder & Principal	erayne@geenuinearticle.com
Gabriel Deem	Irving Schools Foundation	Marketing Coordinator	gdeem@irvingisd.net
Erin Windham	Nacogdoches ISD	Community Engagement	ewindham@nacisd.org

2026 Speaker Directory

SPEAKER	ORGANIZATION	TITLE	EMAIL
Jane Kernen	Lake Travis Education Foundation	LTEF & Corporate Relations Specialist	kernenj@latisdschools.org
Janet Bubert	Underwood Law Firm	Attorney	janet.bubert@uwlaw.com
Jennifer Garcia	Clear Creek Education Foundation	Executive Director	jggarcia@ccisd.net
Judy Geelhoed	SAISD Foundation	Executive Director	jgeelhoed@saisd.net
Jessica Almaraz	Alamo Heights School Foundation	Director of Donor & Alumni Relations	jalmaraz@ahisd.net
Kenny Lange	Kenny Lange Coaching	Scaling Coach	kenny@kennylange.com
Kenny Sigler	Sigler & Co	Founder	kenny@siglerco.com
Kim Crumrine, CEFL	Royse City ISD Education Foundation	Executive Director	kimberlie.crumrine@ercisd.org
Kristal Frazier	FundJoy®	Nonprofit Consultant	kristal@fundjoy.org
Kristin Campbell	Kristin Campbell Consulting	Principal Consultant	kristine@kristincampbellconsulting.com
Lexy Young	Methodist Dallas Medical Center	Director, Public Relations and Community	lexyyoung@mhd.com
Mike Taylor	National Association of Education Foundations	CEO	ceo@educationfoundations.org
Mita Havlick	Dallas Education Foundation	Executive Director	mhavlick@dallasisd.org
Nikki Davis	WFISD Foundation Inc	Executive Director	ndavis@wfid.net
Patti Pawlik-Perales	Beeville Education Foundation	Secretary	ppawlikperales@yahoo.com

2026 Speaker Directory

SPEAKER	ORGANIZATION	TITLE	EMAIL
Quintin Shepherd	Pflugerville ISD	Director	quintin.shepherd@pfsd.net
Rachel Muir	Nonprofit consultant, speaker & trainer	CFRE	rachel@rachelmuir.com
Randy Lewallyn	Mesquite ISD Education Foundation	Executive Director	hlewallyn@mesquiteisd.org
Ryan O'Donnell	Austin Ed Fund	Administrative Supervisor of Programs & Project Management	ryan.odonnell@austinisd.org
Shawn Callaway	Foundation Innovation LLC	President	shawnc@foundationinnovation.com
Sherri Bolland	Beeville Education Foundation	President	
Suzi Pagel	Foundation Innovation	Lead Strategist	suzi@foundationinnovation.com
Teresa Benden	College Station ISD Education Foundation	Executive Director	tbenden@csisd.org
Trina Silva	Education Foundation of Harris County	Education Foundation and Partnerships Director	trina.silva@hcde-texas.org
Valerie Foster	Sanger Education Foundation	Executive Director	vfoster@sangereducationfoundation.org
Vanessa Maynes	Alamo Heights School Foundation	Events Manager	vmaynes@ahisd.net



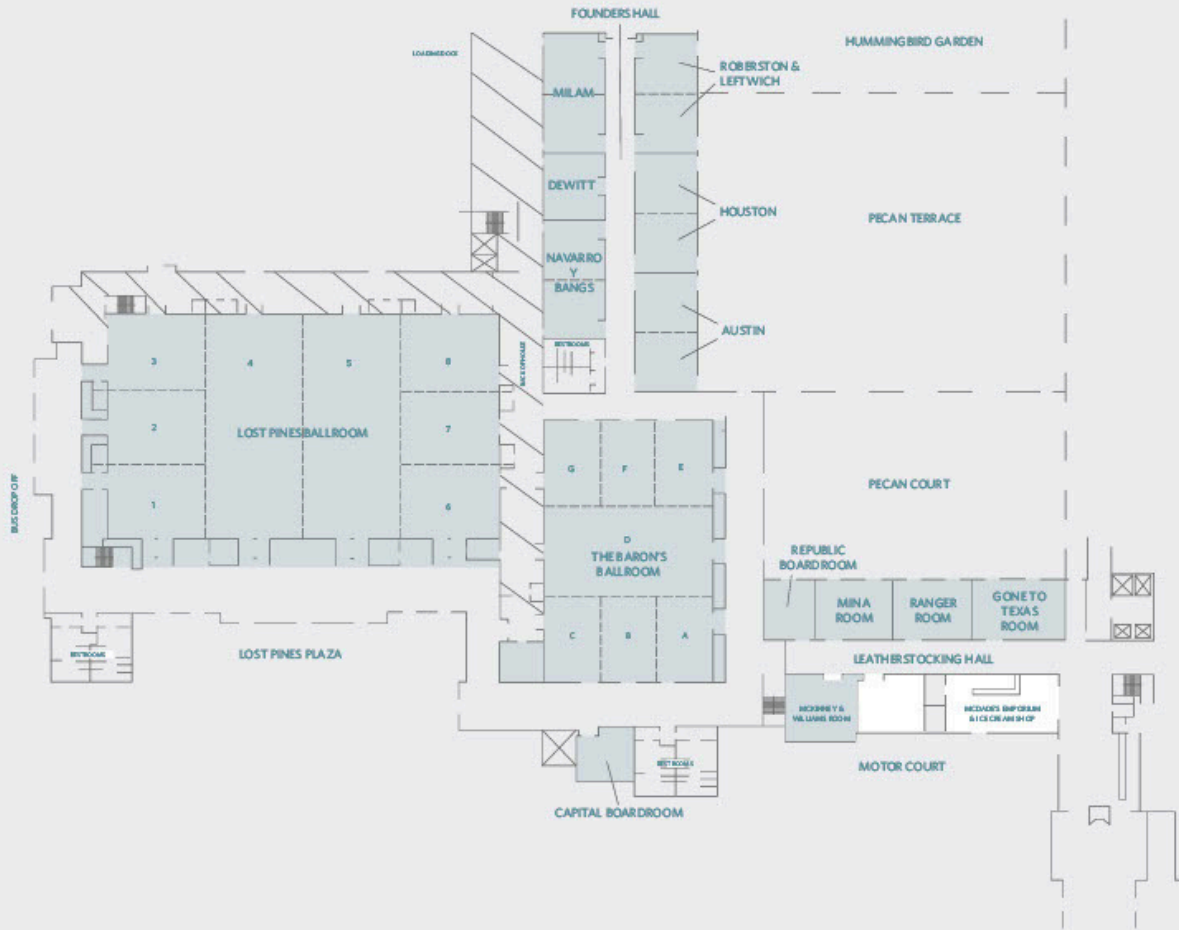
2026 Outstanding Achievement Award Recipients



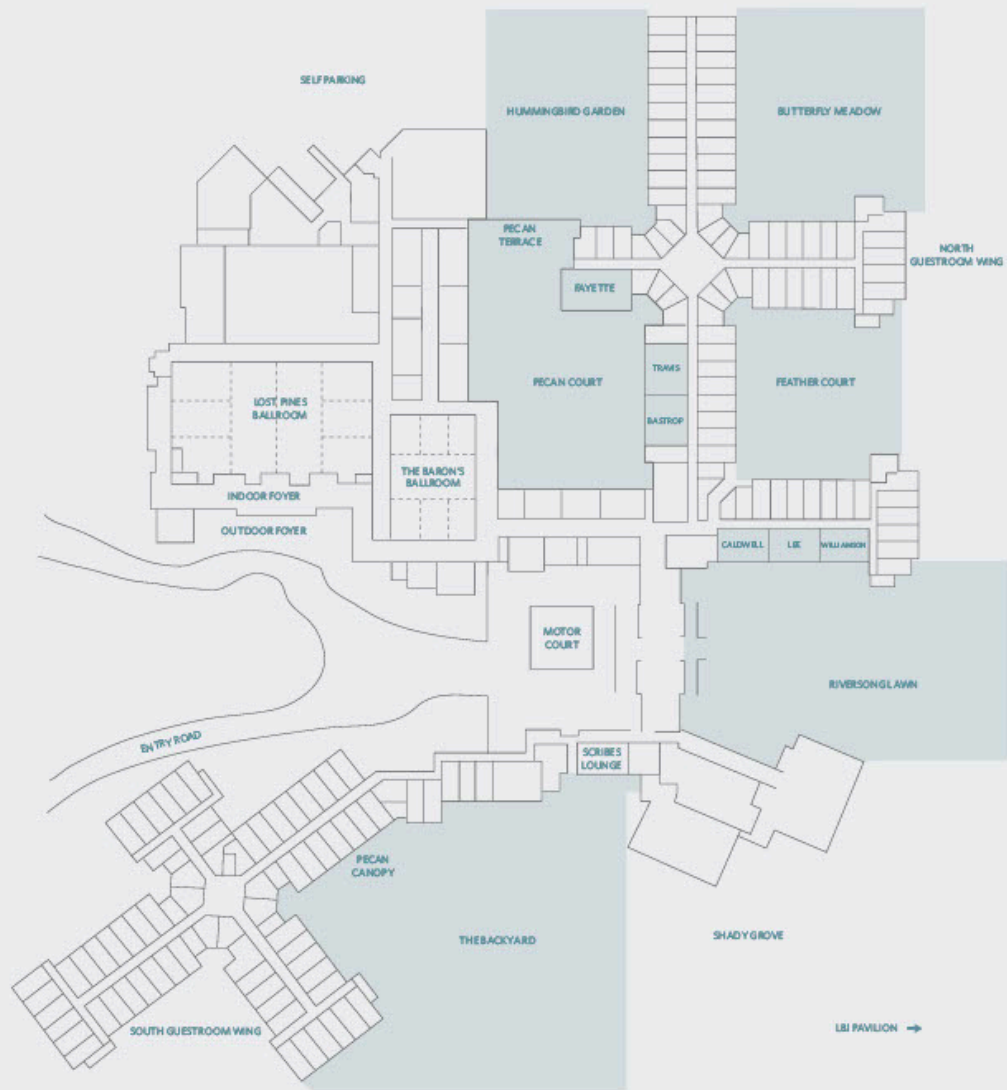
2027 TEFN Annual State Conference

A dark blue graphic with a white and yellow border. On the left, it says "SAVE THE DATE" in white, "2027 TEFN Annual Conference" in white, the "HYATT REGENCY" logo in white, "LOST PINES RESORT & SPA" in white, and "APRIL 12-14, 2027" in white. On the right, there is a photograph of a large, white, two-story building with a porch, surrounded by greenery and a lawn.

FLOOR PLANS
Indoor Function Space



FLOOR PLAN
Outdoor Function Space



Notes

Notes

Notes

**Texas Education Foundation Network
is a program of**



Learn More

