

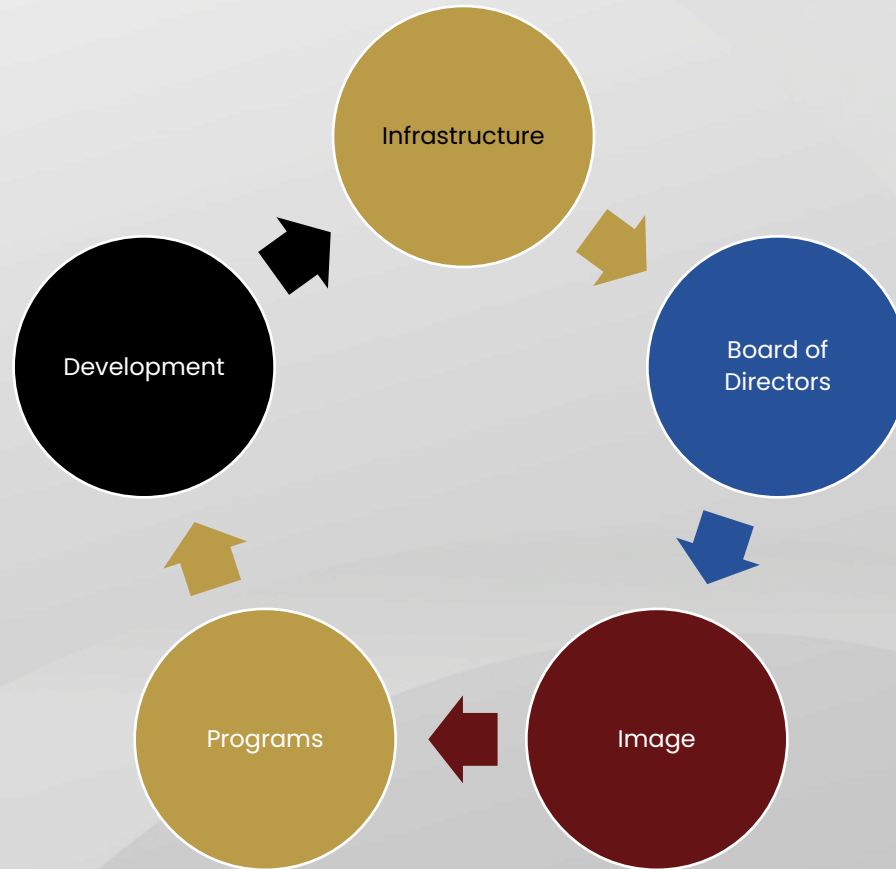
# Critical Components for Sustainability

SUSTAINABILITY, CREDIBILITY, AND TRANSPARENCY TAKE DELIBERATE ATTENTION. LEARN THE COMPONENTS TO ACHIEVE THIS STRUCTURE. PRESENTED BY ERICA EKWURZEL, CFRE



# Key Components

Interconnected components are necessary to ensure success.



FRIENDLY FEUD FRIENDLY FEUD FRIENDLY FEUD FRIENDLY FEUD FR



LY FEUD FRIENDLY FEUD FRIENDLY FEUD FRIENDLY FEUD FRIENDLY





**Articles of Incorp.**

**35**

**IRS Tax Filing 990**

**10**

**Fed'l EIN**

**25**

**IRS Form 1023**

**20**

**Bylaws/Org Chart**

**15**

SHOW  
QUESTION

HIDE  
QUESTION



Theme



Lose



Cheer



Boo

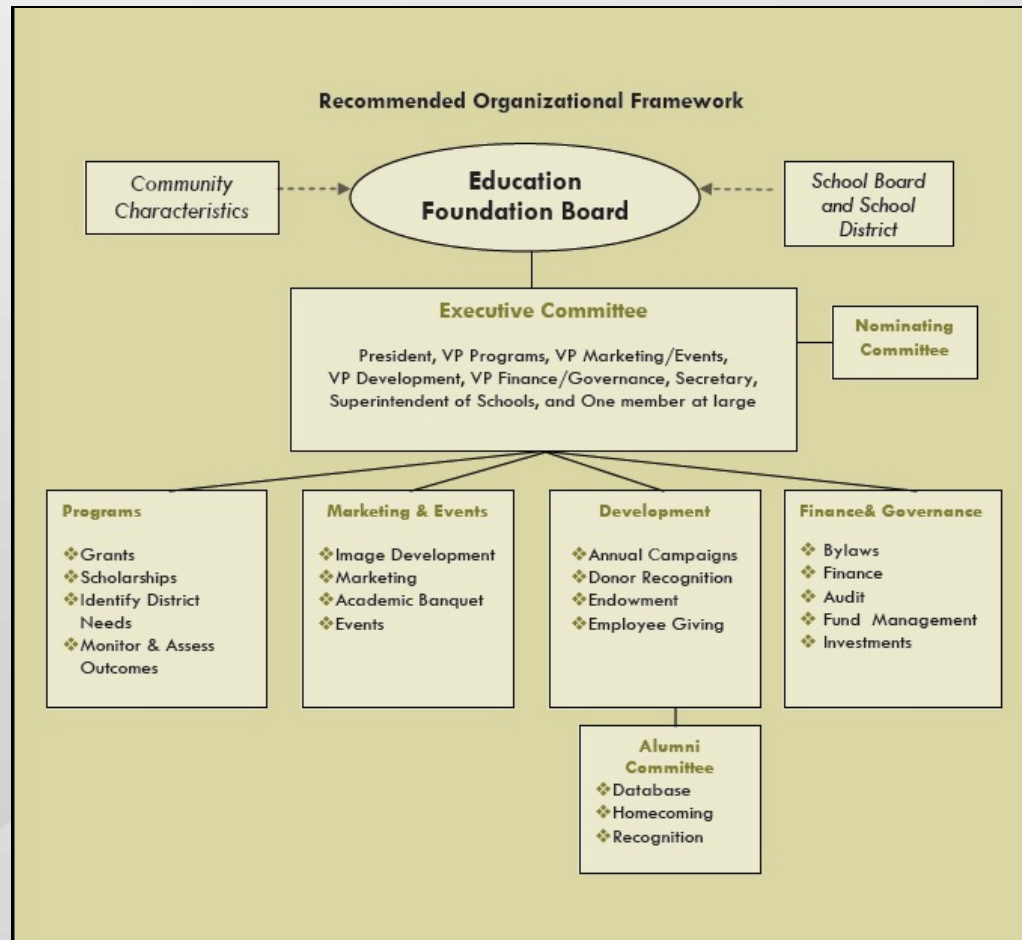


Silence





# Recommended Organizational Framework

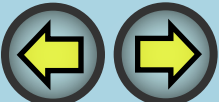


# Board of Directors

XXX



Community-Driven Volunteers	35	Board Development	15
ISD Support (independent & collaborative)	30	MOU	10
BOD Expectations	25		
Organized Recruitment	20		



SHOW  
QUESTION

HIDE  
QUESTION

Theme

Lose

Cheer

Boo

Silence

# Identification

### Sample Board Matrix

[illegible]





**Brand /Logo**

**35**

**Events**

**15**

**Online Presence**

**30**

**Print Materials**

**5**

**Comms Plan**

**25**

**Press Releases**

**20**

SHOW  
QUESTION

HIDE  
QUESTION



Theme



Lose



Cheer



Boo



Silence



# Image/Branding – Logo Development



# Programs

XXX



**Aligned with ISD  
Strategic Plan**

**35**

**Share the Impact!!**

**20**

**Academic  
Achievement**

**30**

**Fair & Transparent  
Process**

**25**

**Assessment  
& Outcomes**

**20**

**SHOW  
QUESTION**

**HIDE  
QUESTION**



Theme



Lose



Cheer



Boo



Silence





# Grants

- Innovative initiatives
- Funds into the classroom
- Systemic grants
- Application on-line
- Grant review committee
- Blind review
- Prize party
- Assessment and outcomes





Methodical Dev Plan	35
---------------------	----

Stewardship	10
-------------	----

Diverse Streams Of Revenue	25
----------------------------	----

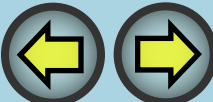
--	--

Relationship Fundraising	20
--------------------------	----

--	--

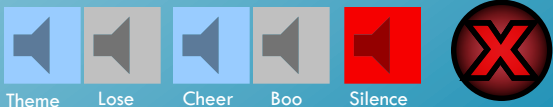
Share Impact!!	15
----------------	----

--	--



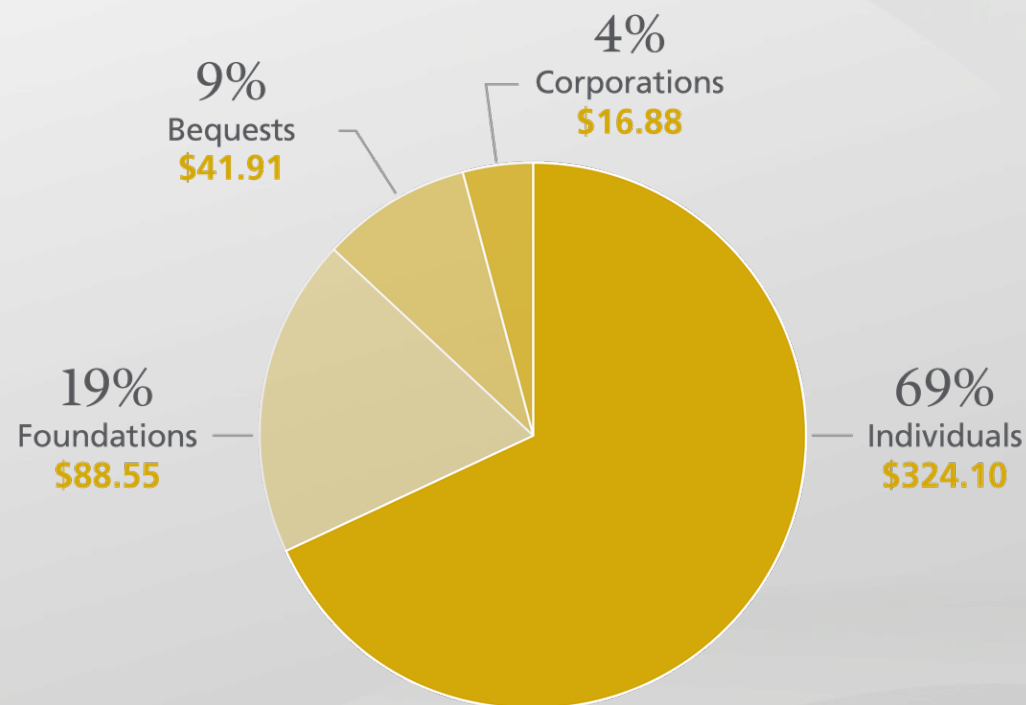
SHOW QUESTION

HIDE QUESTION



# 2020 contributions: \$471.44 billion by source of contributions

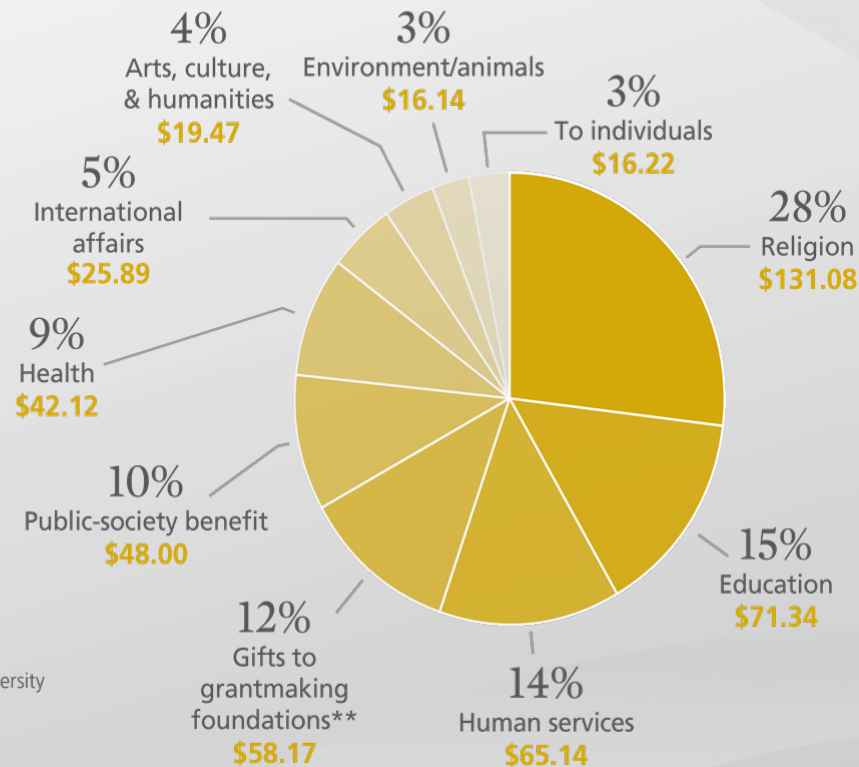
(in billions of dollars - all figures are rounded)





# 2020 contributions: \$471.44 billion by type of recipient organization\*

(in billions of dollars - all figures are rounded)



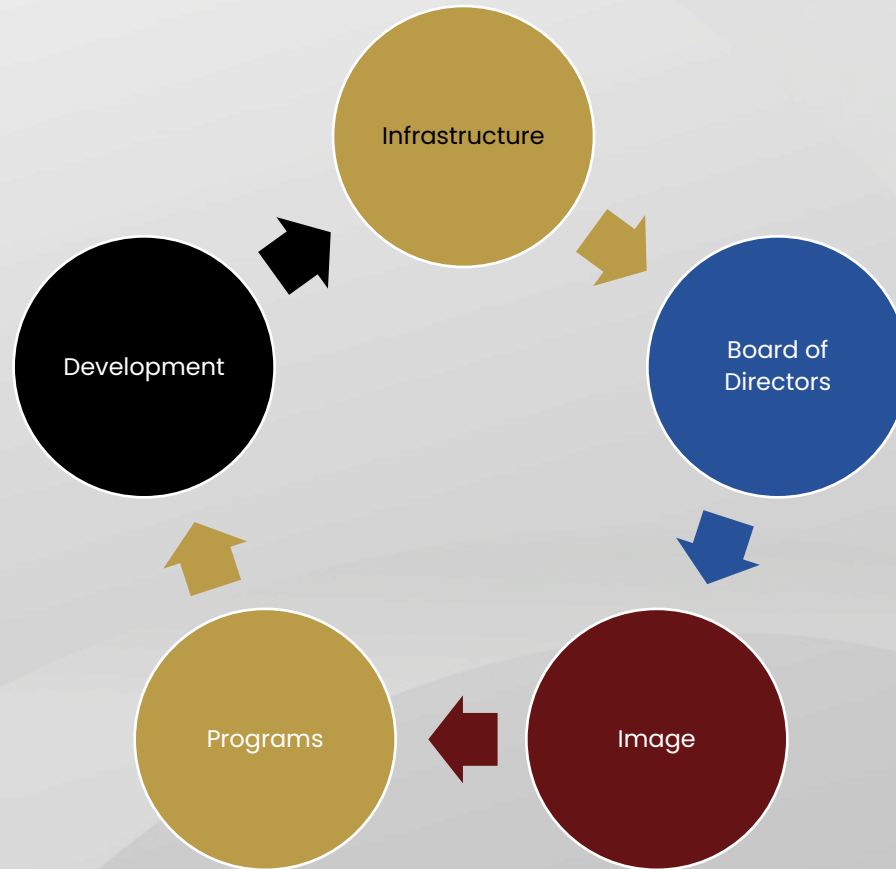
\* Total includes unallocated giving, which totaled -\$22.13 billion in 2020.

\*\* Estimates developed by the Indiana University Lilly Family School of Philanthropy using data provided by Candid.



# Key Components

Interconnected components are necessary to ensure success.





# Thank you for attending!

Erica Ekwurzel, CFRE, MPAff  
CivicAIM

[Erica@foundationinnovation.com](mailto:Erica@foundationinnovation.com)



Please take 2 minutes to  
complete our survey!

Texas Education Foundation Network | [www.tefn.org](http://www.tefn.org)  
Foundation Innovation LLC | [www.foundationinnovation.com](http://www.foundationinnovation.com)

TEFN has partnered with Foundation Innovation, LLC for the launch of TEFN Connect. This comprehensive resource center is a service tailored just for education foundations and has been developed for you at no cost and an added benefit to TEFN members. For more information, please visit [tefn.org](http://tefn.org) or [foundationinnovation.com](http://foundationinnovation.com).

